



# Newsletter

Welcome to TFT's Newsletter! It's a busy time for TFT and we'd like to keep you updated on our work around the world.

**Issue 6 ~  
March 2010**

[CSE](#)  
[India](#)  
[Responsible Products](#)  
[Congo video](#)  
[ECOngress](#)  
[Perhutani](#)  
[Biso na Biso](#)  
[Laos](#)

### TFT Members' Update

**TFT now has 62 members**

See the complete list on our website.

Workshop held in the UK on the proposed European Regulation.

### 'In Conversation'

TFT's 'In Conversation' Podcast aims to capture stories, thoughts, aspirations and motivations from the people we meet or work with around the world.



See our website to download our latest podcast:  
[www.tft-forests.org/podcast.php](http://www.tft-forests.org/podcast.php)



[www.tft-forests.org](http://www.tft-forests.org)



[www.timbertradeactionplan.info](http://www.timbertradeactionplan.info)



[www.climatetree.org](http://www.climatetree.org)

**facebook**

<http://www.facebook.com/pages/The-Forest-Trust/154586823573>

### CSE Pioneer Promotion graduates

World Leaders of the timber trade industry February 2010: The first group of six students have just finished their 9-month training session at the Centre of Social Excellence (CSE).



They have presented their final reports and conclusions on the practical work they undertook in their host companies and the research component that comprised their final CSE thesis. These reports form a large part of the final grades they have received and are the basis for the successful award of the CSE final certificate.

The students have now graduated; the Graduation Ceremony took place on the Sunday 7 February in the afternoon at the beautiful park and conference centre of *Bois Saint Anastasie* in central Yaoundé.

Approximately 35 guests-invitees attended, among whom the proud families of the graduates, several CSE visiting teaching staff, representatives from local organizations and universities, and TFT staff.

The ceremony and awarding of certificates was followed by Champagne toast and a delicious buffet of Cameroonian specialty dishes. Each student received a Swiss army knife as a small gift from TFT Switzerland that should be useful in their future work in the forest!

Marianne Martinet, CSE project officer, acted as Master of Ceremony. TFT's Dr. Norbert Gami, Anthropologist and Social Expert, greeted guests and pre-



sented TFT, the CSE and its mission. Liz Forest, as representative of TFT Switzerland, read a statement from TFT's Executive Director Scott Poynton who was unable to be present at the

landmark event. Dr. Alphonse Kabré, the CSE's new Director of Studies, and Dr. Jerome Lewis, anthropology professor at University College London and external adviser to the CSE, were also present.

Immediately thereafter, each of the 6 CSE graduates made a short 15 minute presentation on the work they undertook during their five-month internship with a partner forest company and then fielded questions from the audience.

This portion of the afternoon lasted much longer than anticipated as the audience interest in the students' work led to many questions (all answered quite expertly) and a very lively debate on responsible forest practices, the role and responsibility of national authorities in forest management, and the rights and situation of indigenous forest communities in the Congo Basin.



As one session ends, the next is starting!

At the same time the first students graduate, the second group of students are being welcomed at the CSE. The theoretical classroom portion of the CSE training will now take place in Yaoundé at the new CSE branch in the Etoi Méki neighbourhood. The practical field work will continue to take place in various sites in Congo-Brazzaville.

In addition to a new branch for the CSE, TFT is also pleased to announce the arrival of a new Study Director for the CSE, Dr. Alphonse Kabré.

Alphonse joins TFT from Burkina Faso where he has worked extensively in environmental education. In taking up the post, Alphonse becomes the principal interlocutor for the students at the CSE.

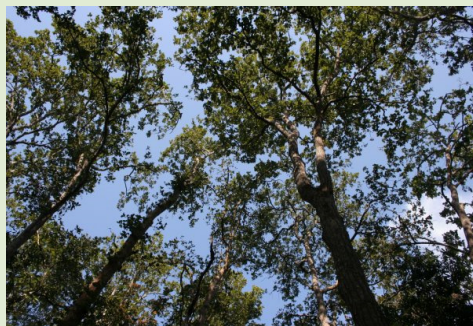


He is responsible for all pedagogical support and will manage the administration and logistics for the teacher-trainers and the CSE's annual calendar of studies. Dr. Norbert Gami, TFT's social expert, will continue to support the CSE from his office in Brazzaville, and most notably for all field work.

## TFT TO set up India Programme

The Forest Trust is currently looking to establish a presence in India in the areas of sustainable forest management and FSC certification, with the ultimate goal to link forest products to the international market for certified and responsibly produced consumer goods. Therefore TFT will be setting up an office in the country in the first half of 2010.

As a part of its India operations, TFT staff will visit factories to evaluate the current situation, consult stakeholders, and look into existing timber tracking mechanisms and the running of mills. The assessment



phase will indicate where wood control sys-

tems can help bring improvements in the traceability of the supply chain. TFT will also be looking at the forests providing raw materials to the factories.

Overall the TFT team will plan the way towards establishing legality and eventually FSC certification for the supply chain from the forests to the final buyers in Europe.

## New video Out!

### See how we promote legal and sustainable logging in Congo

New video out illustrating the work The Forest Trust does in support of legal and sustainable logging in the Republic of Congo. Hear the people on the ground, see the forest of the Congo and what actions TFT takes to protect them.

The film highlights the sustainable forest management activities in the CIB concessions, and special projects such as the Indigenous Peoples Mapping Programme, the Centre of Social Excellence and the

community radio Biso na Biso.

The film also explains the need for consumers to favour wood products from sustainably managed sources for the benefit of the environment and of people.

Find the film here:

<http://www.tft-forests.org/video.php>



## TFT is working towards responsible palm oil

The Forest Trust has developed a unique model that uses market leverage to take action against deforestation.

Retailers around the world have joined TFT to develop solutions to eliminate illegal timber from their supply chains and incentivise sustainable forest management on the ground. The buying power of retailer companies has been nudging the entire timber industry towards sourcing FSC certified timber and has allowed responsible forest managers to find markets for their timber.

For the past 10 years, while focused on tropical forests and wood products, TFT has sharpened his specialized problem-solving skills, business sensibility and first-hand understanding of supply chains.

### TFT's experience with supply chains gained in the timber sector to be applied to palm oil

Now TFT is applying this leadership, experience and knowledge to minimise the forest footprint of products in non-wood business sectors, such as agriculture and ranching.

TFT's expansion into the non-wood sector is the result of our previous experience in the timber sector as we drive consumer awareness and demand for responsible products. Specifically, TFT members have requested supply chain support for palm oil in order to market forest responsible products.

### Harnessing purchasing power to increase the demand for and use of Responsible palm oil

Palm oil is a major driver of deforestation, particularly in South-east Asia, one of the world's most biodiverse areas. Due to its low price and versatile nature, palm oil is found in at least 10 per cent of supermarket products marketed globally, including biscuits, frying oil, sauces, chips, chocolate, soaps, shampoo, cosmetics, detergents, livestock feed and many more. One initial solution is to substitute palm oil with other vegetable oils to reduce the expansion pressure.



However it is also a significant source of revenue for palm oil producer countries, and some palm oil cannot be substituted by other vegetable oils due to its unique properties; in these situations, TFT will recommend the use of Sustainable palm oil.

TFT in Europe has been asked by retailers to help them to define a responsible palm oil purchasing policy. TFT has now started working with a major European retailer to encourage them to source palm oil in a re-

sponsible way. This means buying palm oil that originates from companies that are certified under the RSPO scheme and fully compliant with all RSPO requirements which includes being fully transparent, limiting their environmental impact (*i.e* do not deforest to plant), and respecting land rights and free prior and informed content of local communities. TFT is aware of criticisms of the RPSO scheme, and so TFT is working to set up a group of food manufacturers with the aim of establishing

- Monitoring and traceability systems to ensure plantations are complying with strict RSPO requirements, and
- Providing technical assistance to growers, particularly smallholders achieving RSPO certification.

Specifically on community management, TFT has a strong knowledge and successful practice of supporting smallholder groups to reach FSC certification and will apply the same social and training skills with palm oil growers seeking RSPO certification.

Although this may seem like a tall order at the moment, ten years ago, the same was said when TFT set out to transform the outdoor furniture market.

## Update on Perhutani activities in 2009

Perum Perhutani, a large government owned logging company, has been managing teak, mahogany and pine plantations on the island of Java since the 1960s. TFT is working with 6 of the 57 districts in the company.

During 2009, TFT has been assisting Perhutani towards FSC certification actively in six forest management units (KPH). Overall, the main tasks included offering support towards compliance with FSC Partial Certification and improving the respect of traditional and civil rights. Besides concentrating on 6 KPHs, TFT worked on developing and facilitating the implementation of a social policy and strategy throughout the company to ensure the compliance with Criterion 1.6 (stating that "Forest managers shall demonstrate a long-term commitment to adhere to the FSC Principles and Criteria").

Here were just some of the important activities for the TFT-Perhutani Teams in 2009.

### **Main FSC Assessments**

TFT assisted Perhutani prepare for the Main Assessment in three forest districts, Cepu, Randublatung and Ciamis. The assessments were performed by the SGS. Cepu was assessed on January 27 - 30; Randublatung on January 30 - February 2; and Ciamis on February, 4 - 7 2009.

The assessment carried out resulted in three Major Corrective Action Requests (CARs) for both Cepu and Randublatung, regarding the integrated forest management planning, hazardous material management, and restoration programme.

Perhutani focussed to close these Major CARs following the receipt of the final report from SGS. These Major CARs were closed at Major CARs verification audit conducted from October to November. KPH Ciamis had only 1 Major CAR regarding integrated forest management planning, which was closed at the same CAR verification audit.

### **Training sessions**

A number of training courses were done to prepare Perhutani staff to accelerate the implementation of FSC Principles and Criteria in the others FMUs at the Gap Assessment stage or at the Certification Action Plan stage.

To assist, TFT team developed and joined Perhutani in conducting training on Social Communication at three sessions in December with some 30 participants attending each session. Top-

ics covered the causes and background of forest resource conflict, conflict resolution, collaboration, communication, facilitation, ways of determining the security zoning management, and overall how to conduct community approach. Further social communication training is planned for all head of forest district at Perhutani for 2010.

Health and safety training, environmental monitoring and management, GPS use as well as the process behind an SFM Audit were some of the other training sessions organised at Perhutani in 2009.

### **Social Issues**

The social situation is complex, but Perhutani is working at resolving social conflict and land tenure issues with positive steps and some success. The company is taking measures to ensure good interactions with local communities and secure access to resources for all. The company is also improving the rights and working conditions of its employees.

### **Environmental issues**

In line with the forest certification process up to 2009 an EMS (Environmental Management System) has been developed in some

KPHs, facilitated by TFT. Following the Annual Work Plans, several steps were taken to ensure environmental compliance. Measures included Environmental Impact Assessments and the revisions and socialisations of a number of studies, Standard Operating Procedures, guidelines, observations in order to support the implementation of environmental management and monitoring.

Monitoring and surveys were conducted on mining impact in the KPHs, rehabilitation of riparian zones, fisheries management, hazardous material management, and pest, disease, invasive and alien species control among others. Other steps included the development of a plant database and schedules for regular monitoring and surveying.

Perhutani is now balancing their hopes for certification with the reality on the ground. Reaching FSC is a sustained and difficult process. Although working in only a minority of the districts actively, TFT is striving to support the company achieve responsible forest management throughout. And we plan to continue to support the company.

### **Some images from 2009 activities**



Assessments in Randublatung and Kebonharjo, the Banten office



HCVF in Ciamis, wildlife in Randublatung, curcuma cultivation and feed for livestock is gathered by the local population



Classroom and field training session at Perhutani

## Biso na Biso: latest newsletter out

The newsletter highlights events in the first year of Biso na Biso's existence. The radio has become a true tool reinforcing links between the communities, a communication relay for the CIB and valuable development vector for the target populations.

The newsletter highlights events in the first year of Biso na Biso's existence.

The radio has become a true tool reinforcing links between the communities, a communication relay for the CIB and valuable development vector for the target populations.

Read about the participatory management structure, find out more about Alossi Marcel, one of the coordinator, and find out what are Biso na Biso nights!

Download the Newsletter at this address:

<http://www.tft-forests.org/newsletters.php>, available in French and English.



## TFT presents at ECOngress

The ECOngress on Legal Wood Sourcing & Building Green Markets was held on Sunday, 31 January in Las Vegas. The half day event was organized by the Sustainable Furnishings Council, a non-profit coalition of industry players founded in October 2006. Its aim is to promote sustainable practices among manufacturers, retailers, and consumers alike. Currently over 400 members are part of the Council.

Other organisers included World Wildlife Fund, Rainforest Alliance, Forest Stewardship Council, The Forest Trust and other leading governmental, environmental, academic and trade organizations.

### TFT's presents the support available to companies

Thirteen speaker panellists from leading academic, governmental, environmental, industry and media organizations including World Wildlife Fund, Rainforest Alliance, and The Forest Trust among others.

TFT CEO Scott Poynton presented how the TFT model operates, from a full supply chain assessment, knowing the origin of all wood, and looking for alternatives where necessary - bringing wood out of forests, through factories, and to retail floors.

He explained how Lacey Act can seem frightening and overwhelming, but with systems, like TFT's put in place, the company can much more easily meet Lacey requirements.

His participation was key at the event, because it got companies to realize that they need to, and *can*, get their supply chains legal, Lacey compliant, and to FSC.



Scott says: "I very much enjoyed the ECOngress and full marks to SFC for organizing what was a great event. The participants really got very actively engaged in the discussions and whilst it's clear that many have some work to do to become compliant under the Lacey Act, many understood where TFT could assist them in that journey.

We've had a number of follow-up leads from the event and we look forward to building our relationship with the people at SFC who really do share our values".

### Timely event as the last phase of the Lacey Act will come into effect next month

More than 100 attendees participated in discussion dealing with Policy, Manufacturing and Marketing. Topics covered policy changes, legislation and enforcement, engaging with suppliers, securing safe supply, manufacturing and retail concerns, and ultimately how to make it

comprehensible and compelling to the consumer.

The event had information regarding every point in the supply chain as to the importance of known legal origin and responsible forestry for wood products. Participants learned about tools, solutions, and issues of vital importance given the impending next phase of Lacey Act declaration requirements that will be effective this April. The Lacey Act is a U.S. law amended in 2008 banning commerce in illegally sourced plants and their products, including wood and paper products.

This April, furniture items will be included in Lacey declarations requirements reinforcing grounds for legal prosecution of entities importing, transporting, selling or purchasing products using illegally harvested or traded wood from the U.S. or abroad. Companies must now consider the legality of all timber products put on the market and not wait to be caught up by legislation.



From L-R Scott Poynton, Jeff Hiller, Mark Haynes, Margaret Casey, Roger Jones, Antonio Larosa. Both photos courtesy -World Market Center Las Vegas .

## Update of the Luang Prabang Teak Program in Laos

The Luang Prabang Teak Program has made significant progress in 2009, paving the way for on time FSC certification by the end of 2010.

Teak sales have commenced, farmer groups formulated, intensive training continues to be rolled out, market awareness is improving and buyers

have been connected with the farmer group resulting in increase in royalties to the growers.

Since end 2007, with field implementation commencing mid 2008, the Luang Prabang Forestry Section and the Lao Forest and Trade Platform as Program implementers with the support of the

Department of Forestry, Japanese International Cooperation Agency and Swedish International Development Cooperation Agency have been supporting the pilot community near Luang Prabang with improved plantation management techniques towards the end goal of FSC certification.

We have previously communicated our Platform in Laos however for those that may not be familiar the Lao Forest and Trade Platform is a partnership of The Forest Trust (TFT) and WWF's Global Forest and Trade Network (GFTN). This partnership has developed the Lao Forest and Trade Platform (LFTP) to assist the Government of Lao to achieve their goals to develop an efficient and competitive forest industry. Built on a foundation of sustainable forest management of natural and plantation forests, the platform is contributing to the goal of poverty eradication by developing community based resource management approaches, processing sector developments and market links to the existing global demand for certified wood products.



To help the teak farmers get higher returns for their produce and demonstrate the benefits of working in a group, the Forestry Section and LFTP made it a priority to identify buyers for their teak. In September 2009, buyers representing a company, supported by the LFTP, met with the farmer group to review the existing resource and openly discuss the teak sales process. Buyers and growers ex-

pressed serious interest in purchasing and selling teak through the farmer group and the individual farmers had an invaluable experience of gaining first hand information surrounding the end use of their teak and methods to improve teak value.

The initial interest, through a facilitated process, translated to direct purchase between the processor and the farmer group. The initial sales have benefited the growers through improved sell price, improved capacity to undertake negotiations with buyers, improved understanding of log grading, improved ability to work as a group to leverage the advantage of increased volumes to market and the removal of a percentage of poorer formed stems to leave the remaining stock grow on to achieve premiums in the market place.

For villagers to get the maximum value for their teak, the group has increased market transparency through field trips and facilitating the negotiations of the group to sell directly into the current teak market. The implementing partners have responded to both the buyers and growers needs by initiating a local markets survey and offering to assist in the measurement, harvesting and documentation that is required for a sale from the group directly to the processors.

#### Proposed activities for 2010

The Program has entered into the initial stages of its expansion into selected surrounding communities by commencing

work on farmer group formulation, landuse planning and teak lot registration. Transforming the Program from a pilot to a project with the capacity to significantly change the livelihoods of rural communities whilst implementing and expanding sustainable forest management practices in the Lao PDR is critical to the programs long term success.

Preparations for the FSC pre assessment are underway with an internal GAP assessment completed in January 2010 and work plan developed to address the issues prior to the pre assessment. In parallel, additional training has also being organised in both the pilot village and to the adjoining villages. Target areas include silviculture, registration (assessing legality of land ownership, using GPS, making certificates, etc), forestry inventory, introductory computer classes, teak market awareness and a range of other plantation management related activities.

Following the pre-assessment the team will focus on addressing the shortcomings identified with a view to having the final external FSC audit completed by the last quarter of 2010 and FSC certificate issued thereafter.



## Workshop held at the UK office – Due Diligence and EU Legislation – How will it affect timber sector companies?

The EU is proposing a new regulation for those who place timber and timber products on the European market, in order to help address the trade in illegal wood products.

Companies placing timber products on EU markets will be expected to adopt a '**due diligence system**' approach to minimize the risk of importing illegal timber into EU. This regulation could be passed as early as June 2010.

On the 18<sup>th</sup> of February, the TFT UK office held a workshop aiming to inform TFT members and non members of how the regulation will affect their business and the measures they may have to take in order to adhere to the changes.

After a warm welcome and introduction by Hilary Thompson (TFT Director), the discussions started with Alison Campbell from DEFRA's Department of International Forestry and Biofuels, who gave a presentation on the current state of play with the

draft regulations, and remaining issues that need to be resolved before the regulation is passed. This gave an insight as to where the process stands at present, the main issues discussed in the Council Working Group, and the aspects of the regulation that are likely to pass in to European law.

After a Q&A session and lunch, Hilary presented some of the ways in which TFT will be helping to prepare members for the new regulation. This could potentially include TFT becoming a Monitoring Organisation, or working with businesses to help set up Due Diligence systems. The purpose of this would be to ensure processes are in place to comply with the requirements of the new law.

Peter Cox (Member Program Manager) continued, and discussed various case studies of prosecutions that have arisen from existing environmental laws such as Lacey Act and CITES. Our newly

recruited Greg Lambe (Senior Program Manager) followed Peter with a presentation on the current views of the stakeholders involved ranging from dark green NGO's, to timber trade federations.

The day was rounded off by discussions and Hilary gave an outline of the future of TFT and working with Forest Responsible Products. Whilst some features of the regulation are still to be decided, such as penalties and the roles of monitoring organisations, the workshop provided information and practical solutions as to how European businesses may meet the necessary due diligence requirements.

